

Downton Abbey®

Lord & Lady

FABRICS BY KATHY HALL



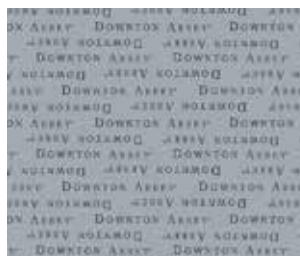
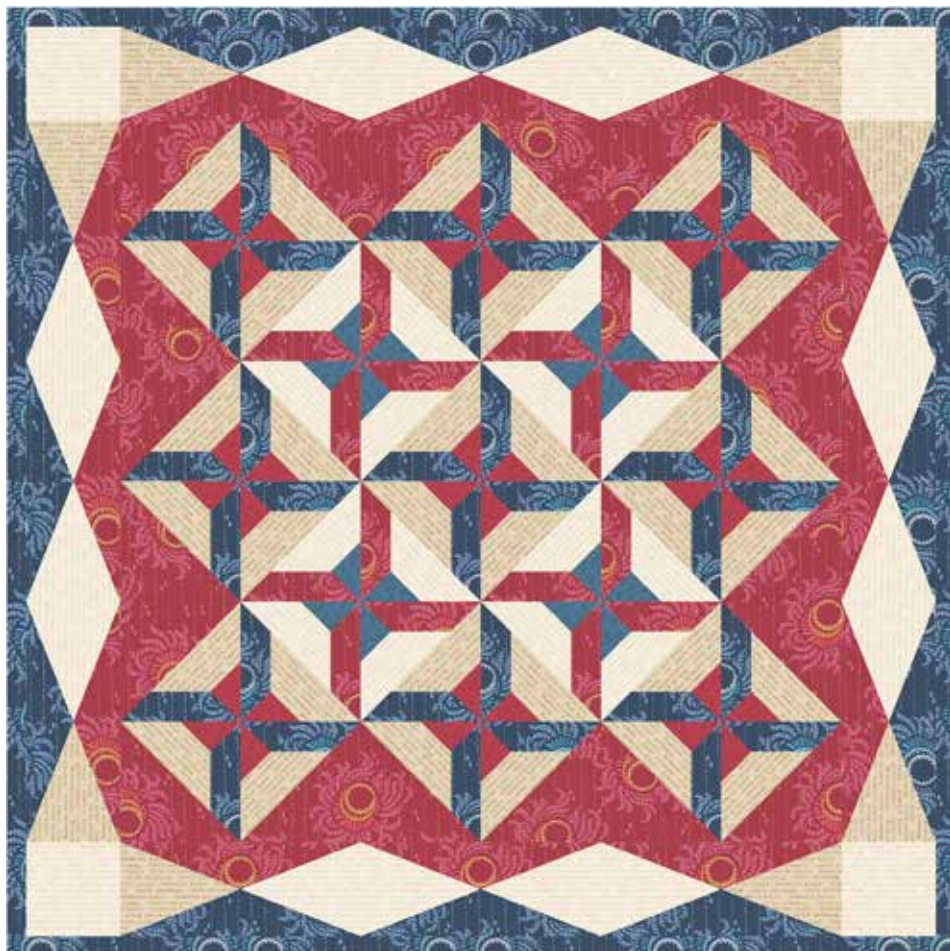
Lord & Lady Grantham
Quilt Design: **Lucy Fazely**

Quilt Size: **51" x 51"**

andoverfabrics.com

About Lord & Lady

While Robert and Cora Crawley may not always see eye-to-eye, their dispositions complement each other greatly, and their marriage brings warmth to Downton Abbey. Robert's Herringbone pattern in this collection is drawn from the wools, worn while out on his hunts. It contrasts with Cora's Dahlia pattern, which is inspired by one of the many elegant dresses she's worn in prior seasons of the show.



Downton™ and Downton Abbey®. ©2013
Carnival Film & Television Limited. All Rights Reserved.

andover

•
•
•
makower uk
The Henley Studio

Free Pattern Download Available

1384 Broadway New York, NY 10018

Tel. (800) 223-5678 • andoverfabrics.com

5/15/14



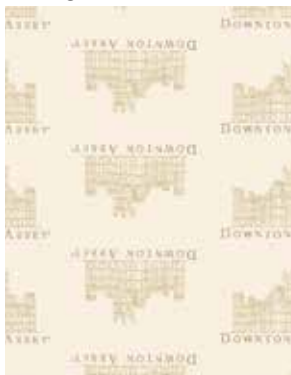
7665-B 1¼ yds (includes binding)



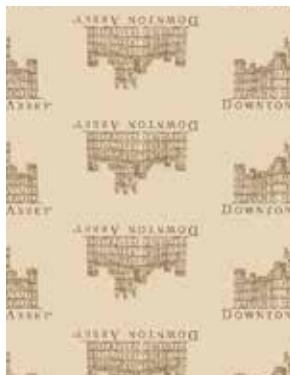
7665-R 1 yd



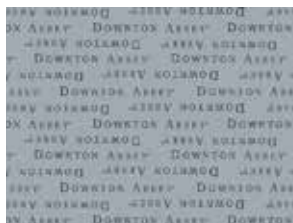
7618-C



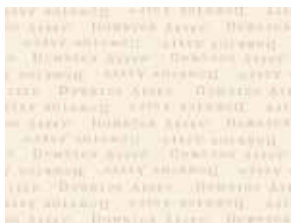
7618-L



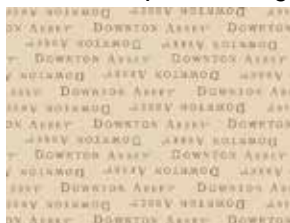
7618-N 3½ yds (backing)



7617-C



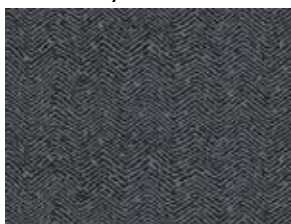
7617-L 1 yd



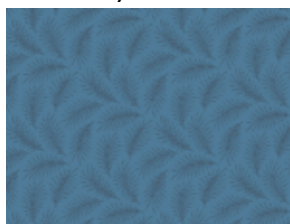
7617-N 1 yd



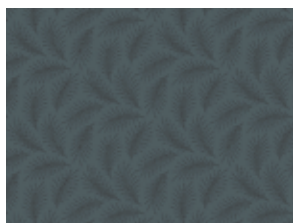
7666-BN



7666-RK



7332-B1



7332-K1



7332-N



7332-R ¼ yd

FABRIC	5 KITS	10 KITS	20 KITS
7665-B	1	2	3
FROM EACH	1	1	2
	7617-L	7617-N	7665-R
7332-R	1	1	1

BACKING

7618-N	2	3	5
--------	---	---	---

Yardage needed for backing: 3½ YDS per kit

Bolts needed to cut project kits.

15 yds = 1 bolt

Fabrics shown are 25% of actual size.

Fabrics used in quilt pattern are shown in black

Downton Abbey®

Lord & Lady

FABRICS BY KATHY HALL

Downton™ and Downton Abbey®. ©2013
Carnival Film & Television Limited. All Rights Reserved.

andover : makower uk
The Hanley Studio

5/15/14